

Co-localization Function

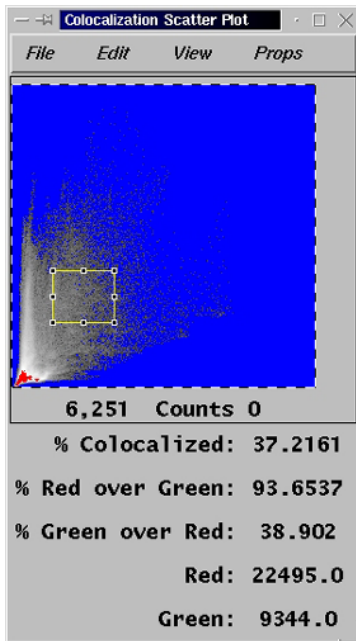
For:

ISee PC Imaging Software

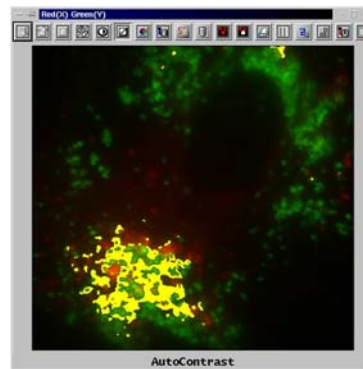
ISee MAC Imaging Software

ISee SGI Imaging Software

ISee's Co-localize Function allows the user to interactively determine the percent co-localization between two dyes and display the results using a scatter plot, pseudo-color image overlay, and text table. The percent co-localization can be determined from two single images, two image lists, and from regions of interest within single images and lists of images. The Co-localize Function is a standard feature of ISee Imaging Software.



The Yellow ROI Frame allows the user to interactively determine the size and position from which the measurements will be taken. As the frame size and position change, the values will be automatically updated on the scatter plot screen and the pseudo-color image overlay will also be updated.



The Menu Toolbar, on the Scatter Plot Display Screen, provides the user with a wide array of parameters for determining the type of data output and Output Parameters. The data can be displayed in a text table that can be edited by the user and then saved in ASCII format.

Colocal	RoverG	GoverR	Red	Green
40.79	62.84	40.97	15024	9797
27.33	55.23	27.44	56977	28305
4.09	402.65	4.13	235907	2418
3.30	3.65	21.54	557	3290
8.30	336.08	8.50	36908	934

